



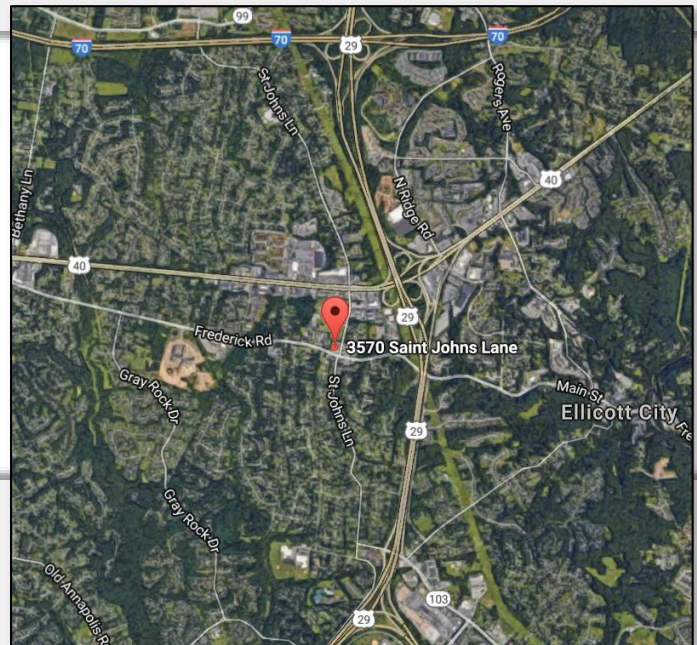
Frederick Crossing
3570 St. Johns Lane
Ellicott City, Maryland 21042

Location Advantages

- Highly visible location at the intersection of Frederick Road and St. Johns Lane
- Close proximity to numerous retail amenities with easy access to Bus Line and Routes 40, 29 and 100

Property Features

- Frederick Crossing consists of a 32,000 SF Retail/ Office building.
- Professionally owned and managed
- Excellent signage Opportunity
- Functional existing floor plans
- Timeless Architecture
- Ample parking 5/1,000
- Zoned BL



For more information:

 Gardner Commercial Realty
Tim Gardner
443.827.1321 Tim@GardnerCR.com
GardnerCR.com

DISCLAIMER: THE INFORMATION PROVIDED HAS BEEN OBTAINED FROM SOURCES BELIEVED RELIABLE. IT IS BUYER'S OR TENANT'S RESPONSIBILITY TO INDEPENDENTLY CONFIRM ITS ACCURACY AND COMPLETENESS. NO WARRANTY OR REPRESENTATION, EXPRESS OR IMPLIED, IS MADE AS TO THE ACCURACY OF THE INFORMATION CONTAINED HEREIN, AND THE SALE OR LEASE IS SUBMITTED SUBJECT TO ERRORS, OMISSIONS, CHANGE OF PRICE OR RENTAL RATE, SALE OR RENTAL STATUS, OR OTHER CONDITIONS, PRIOR SALE, LEASE OR FINANCING, OR WITHDRAWAL WITHOUT NOTICE, AND OF ANY SPECIAL LISTING CONDITIONS IMPOSED BY THE PRINCIPALS.

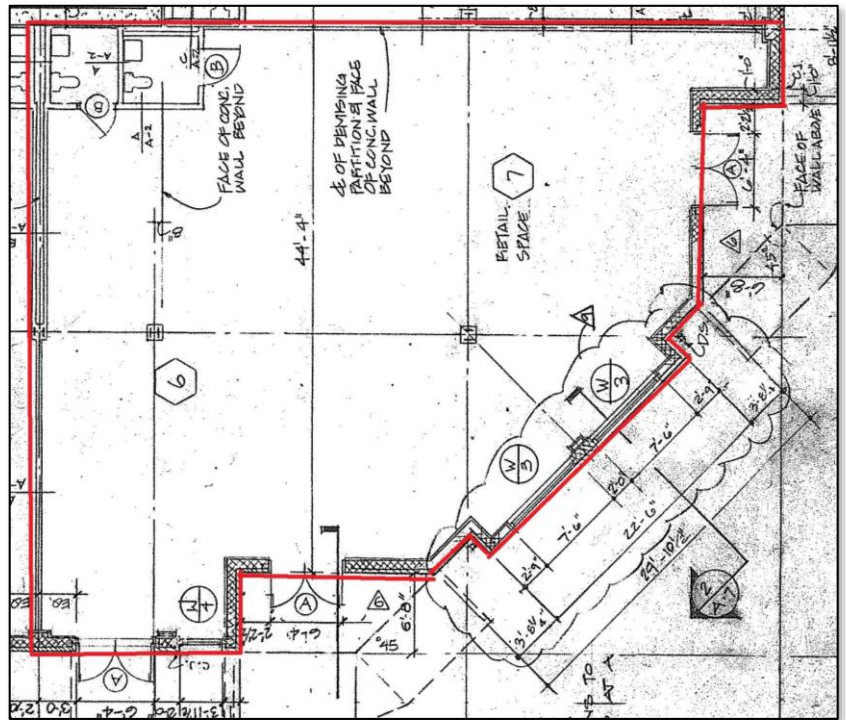
For Lease

3570 St. Johns Lane
Ellicott City, Maryland 21042

Available Suite:

Retail: Suite 105 2,460 SF

- Prominent location with excellent visibility.
- Former jewelry store.
- Available August 1, 2018
- Located on the front corner of the building.



For more information:

Tim Gardner

443.827.1321 Tim@GardnerCR.com
GardnerCR.com

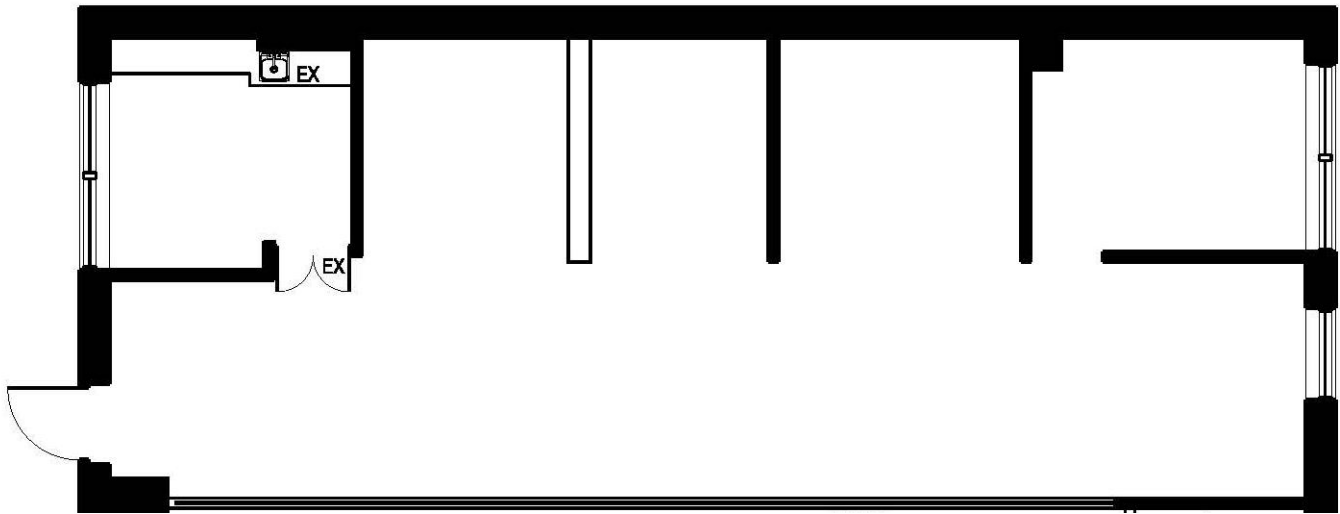
For Lease

3570 St. Johns Lane
Ellicott City, Maryland 21042

Available Suite:

Office/ Medical Suite 201 1,015 SF

- Floor plan can be customized.
- Private restroom
- Direct access office suite
- At grade entrance allows for easy access for clients and employees



For more information:

Tim Gardner

443.827.1321 Tim@GardnerCR.com
GardnerCR.com