

LEASE

OWNED & MANAGED BY



PLAZA 100

8875,8885 & 8895 Centre Park Drive
Columbia, Maryland 21045

Retail/ Medical Office
Building Signage
Expansive window lines
Available ~1,200 SF



GARDNER
commercial realty

GardnerCR.com | 443 732 3200

TIM GARDNER

Owner, Broker

(O) 443 585 3888

(m) 443 827 1321

Tim@GardnerCR.com



PLAZA 100

Columbia, Maryland 21045



GARDNER Commercial Realty is pleased to present PLAZA 100, an opportunity to lease RETAIL / MEDICAL / OFFICE space in Columbia, Maryland.

PROPERTY FEATURES

- Plaza 100 consists of 35,000 SF over three (3) buildings
- RETAIL, MEDICAL, OFFICE
- Professionally owned and managed
- Functional existing floor plans
- Ample parking 4/1,000
- Zoned B-1

MAP





PLAZA 100

Columbia, Maryland 21045

PLAZA 100

8875, 8885 & 8895 Centre Park Drive
Columbia, Maryland 21045

BUILDING COLOR CODE

 8875	Building 1
 8885	Building 2
 8895	Building 3



LOCATION ADVANTAGES

- Adjacent to Route 100 with easy access to I-95 and MD Routes 29, 103, 104, and 108.
- Centrally located between downtown Columbia and Ellicott City with nearby shopping, restaurants, hotels, and daycare

STREET VIEW



Click Here



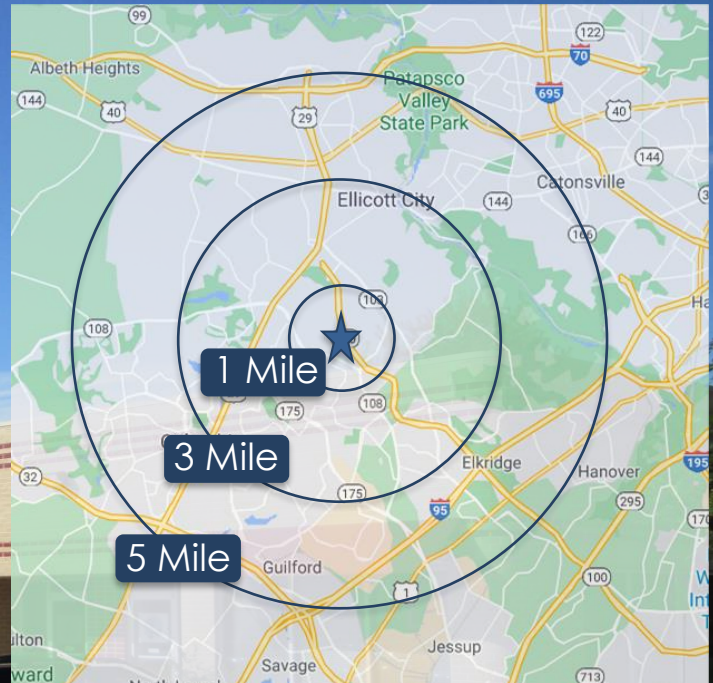


PLAZA 100

Columbia, Maryland 21045

DEMOGRAPHICS

Strong Columbia, MD demographics, highly visible & convenient location



2023/2024	1 Mile	3 Mile	5 Mile
Est. Population	11,354	87,700	220,949
Est. Households	4,239	33,759	85,081
Ave HH Income	\$148,121	\$147,255	\$141,921

* Source: CoStar Realty Information, Inc. 2024



PLAZA 100

Columbia, Maryland 21045



AVAILABLE: 8885 SUITE 2F

Medical / Office / Retail



PLAZA 100

Columbia, Maryland 21045

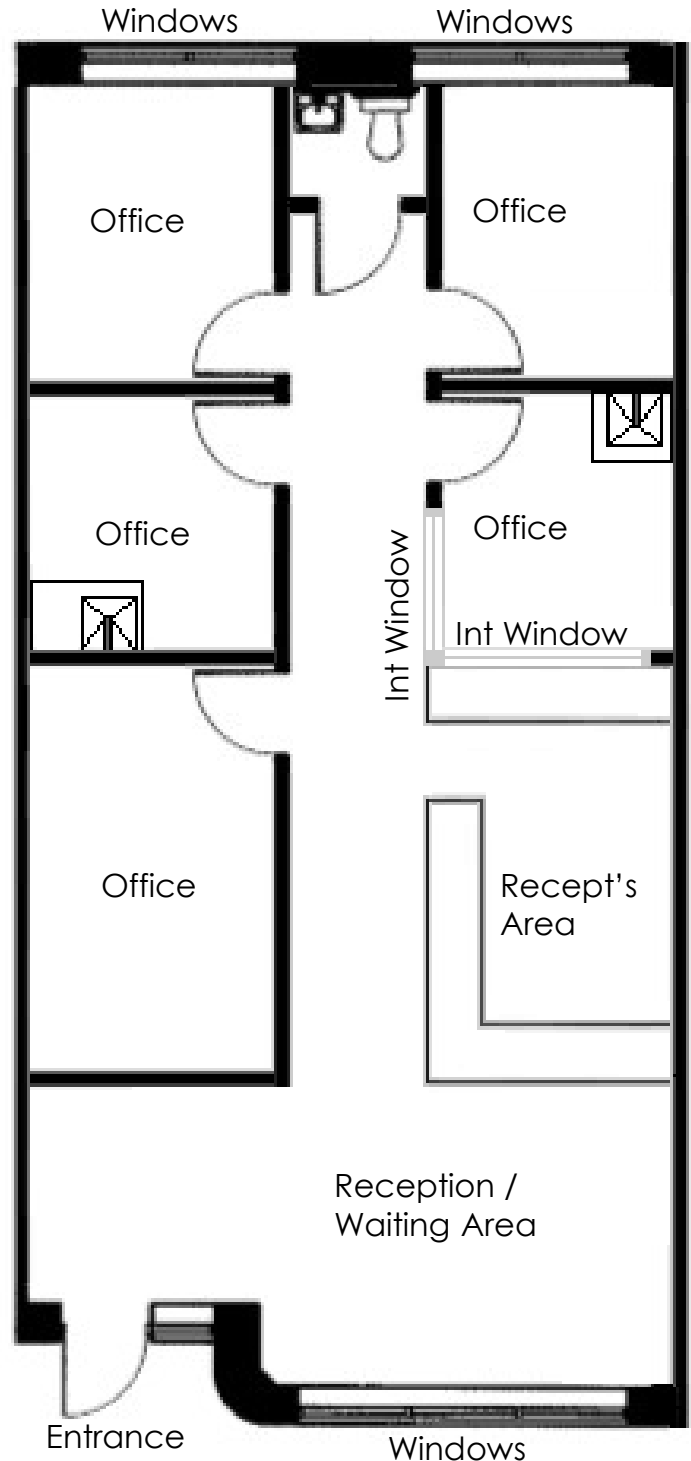


AVAILABLE: 8885 SUITE 2F

Medical / Office / Retail



- ~1,200 SF
- Direct Access Suite
- Function medical / office layout
 - Five (5) offices/ treatment rooms (2 with sinks)
 - Large receptionist's area and waiting area
 - Private restroom
- Building Signage over Suite



Note: Floor Plan NOT to scale and for conceptual purposes only.



PLAZA 100

Columbia, Maryland 21045

8885 SUITE 2F – Floor Plan & Images



Note: Floor Plan NOT to scale and for conceptual purposes only.



PLAZA 100

Columbia, Maryland 21045

For more information or to schedule a tour:



GARDNER
commercial realty

GardnerCR.com | 443 732 3200

TIM GARDNER

Owner, Broker

(O) 443 585 3888

(m) 443 827 1321

Tim@GardnerCR.com

DISCLAIMER:

Gardner Commercial Realty is the Exclusive Listing Broker and represents the Landlord of the Plaza 100 property.

The information contained in this publication has been obtained from sources believed to be reliable. Gardner Commercial Realty makes no guarantee, warranty or representation about this information. Any projections, opinions, assumptions or estimates used here are for example only and do not represent nor guarantee the current or future performance of the property. Interested parties should conduct an independent investigation to determine whether the property suits their needs.

© **Copyright** 2024 Gardner Commercial Realty, LLC. All Rights Reserved.

GARDNERCR.COM